

# The Ryman Auditorium

Caylor Albers

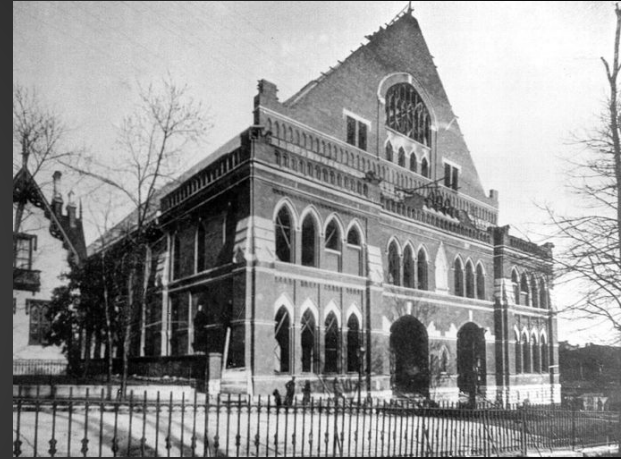
# Abstract and Thesis

Abstract: The Ryman Auditorium is one of the most historic venues in America, and is a prime example of how a smaller venue can be more prominent than a larger one. Due to its history, its acoustics, its location, and its size, the Ryman Auditorium is one of the most prominent small theatres in the entertainment industry today and rivals the Bridgestone Arena as Nashville's prime entertainment venue. It remains fan friendly because of its new renovations and its intimate environment that keep both locals and tourists happy.

Thesis: Because of its ability to create an intense emotional experience due to its historical impact, more intimate environment, and acoustics, the Ryman Auditorium remains important despite the intense competition from larger venues.

# The Beginning

- Tom Ryman
- Sam Jones
- Union Gospel Tabernacle
- Important Appearances:
  - Presidents Teddy Roosevelt and William Taft
  - Booker T. Washington
  - Eleanor Roosevelt
  - Katharine Hepburn



# The Grand Ole Opry

- Moved to the Ryman Auditorium in 1943
- 31 year history
- Artists like Patsy Cline, Hank Williams, Dolly Parton, Roy Acuff, Johnny Cash



# Fan Environment

- Acoustics
- Small Capacity: 2,362
- Close to Broadway
- Ryman vs. Bridgestone





# Renovations

- 1897: Doubled seating for the Tennessee Centennial Celebration
- 1994: air conditioning, proper dressing rooms, refurbished seating, \$8.5 million
- 2014-15: \$14 million expansion



# Conclusions

- The historical significance of the Ryman is one of the reasons why it is still so popular
- Smaller venues usually have a greater appeal to a fan because they can connect with the act much easier than they can in a large venue
- The Ryman Auditorium is a staple of Nashville and has been important in determining Nashville's identity as a town

Important Sources:

The Tennessean

The Ryman's Website

National Parks Services: National Historic Landmark Nomination Form